

**ALIEN** RETRO  
INSTRUCTION MANUAL

## **TABLE OF CONTENTS**

INSTRUCTIONS FOR THE SAFE HANDLING OF PISTOL	2
PISTOL DESCRIPTION, TACTICAL AND TECHNICAL DATA	3
AMMUNITION	4
HANDLING THE PISTOL	4
STRIPPING AND ASSEMBLY INSTRUCTIONS	6
MOUNTING OF COLLIMATOR	9
MOUNTING OF STONES	9
CLEANING AND PRESERVATION	10
LIST OF PARTS	12
TROUBLESHOOTING	16
WARRANTY TERMS AND CONDITIONS	17

## 1. INSTRUCTIONS FOR THE SAFE HANDLING OF PISTOL

Read this instruction manual carefully and follow all the safety instructions that alert you to the possible risks associated with using this product. Should you ever lend or sell this firearm to another person, you must always provide them with this operating and maintenance manual. The manual is also available in electronic form on the manufacturer's website.

When handling the pistol, always follow the safety instructions and treat it as if it was loaded. The manufacturer is not liable for damage caused by improper handling, interference with the weapon mechanism, non-compliance with safety instructions or damage to the weapon due to the use of unsuitable ammunition. Familiarize yourself thoroughly with these operating and maintenance instructions before handling the weapon for the first time.

### **In particular, avoid the following dangerous activities:**

- Never point the firearm at anything you do not intend to shoot at
- Always point in a safe direction even if the firearm is unloaded
- Always keep the pistol under control when in use and never leave it unattended
- Check the pistol before using it (barrel obstructions, corrosion, damage, etc.)
- **Do not use hand-loaded ammunition, use only original full metal jacket or semi-jacketed ammunition (FMJ, MJ, JHP, SP) of appropriate calibre and quality**
- Never use the pistol when under the influence of intoxicating substances (alcohol, drugs, etc.)
- Use glasses and ear protective equipment to protect your sight and hearing (shooting glasses, ear protectors, etc.)
- Do not put your finger on the trigger until you are ready to shoot
- Always consider the risks of the environment around (ricocheting, shooting in poor visibility, etc.)
- Always make sure that the pistol is unloaded before handing it over or taking it from another person
- Never tamper with the mechanism of the pistol or modify the pistol parts in any way
- If you are unsure about the correct functioning of the firearm or its safety, contact the authorized service centre
- Observe the rules and regulations of the shooting range or facility where you are using your pistol
- Store the pistol unloaded and duly secured against the misuse of other persons and keep it separate from the ammunition

### **The pistol has the following safety features:**

- Trigger safety
- Drop safety block
- Ultra-light firing pin
- Out-of-battery fire block
- Striker status indicator

### **Contact for the authorized service:**

Laugo Arms Czechoslovakia s.r.o., Pražská 9, Blansko 678 01, Czech Republic.

## 2. PISTOL DESCRIPTION

### TACTICAL AND TECHNICAL DATA

The ALIEN pistol is a semi-automatic firearm with a low bore axis and fixed barrel using the principle of gas piston delayed blowback, intended for shooting at a distance of up to 50 metres. It is equipped with trigger mechanism with a hybrid inverted hammerless system (HIHS). The pistol frame is divided, the upper functional part is made of high strength stainless steel, the lower gripping part is available in high quality aerospace grade aluminium composite or in polymer.

Characteristic properties:

- Lowest bore axis
- Gas piston delayed blowback
- Short and light trigger pull
- One-click exchangeable rails
- Non-reciprocating upper part of the slide with sights
- Bull Barrel type high accuracy fixed barrel
- Semi-integral slide with low centre of gravity
- Highly customizable modular design
- Exchangeable pistol grip
- Hybrid inverted hammerless system (HIHS)

#### Tactical technical data

Length	210 mm/8.2"
Width	29 mm/ 1.1"
Height	148 mm/5.8"
Barrel length	124 mm/4.8"
Weight	1009 g/2.2 lbs.
Weight with empty magazine	1121 g/2.47 lbs.
Trigger pull adjustable	10 to 25 N * adjustable by manufacturer
Standard magazine capacity	17
Bore axis	1.7 mm below the line of grip axis
Number of replaceable slide rails	infinite
Recoil angle	½ compared to other models

## 3. AMMUNITION

Always use original ammunition complying with the standards for ammunition manufacturers and approved by CIP (Permanent International Commission for the Proof of Small Arms) or SAAMI (Sporting Arms and Ammunition Manufacturers' Institute). Using other ammunition may damage the firearm or injure the shooter.

**The manufacturer does not recommend firing from an empty firearm (without ammunition), as this may cause unwanted wear and tear on the weapon. For the so called "dry firing practice", the use of dummy rounds suitable for such purpose is recommended.**

The firearm has been designed to use only ammunition of the following type: FMJ, MJ, JHP, SP. Using any other kind of ammunition may lead to irregular functioning of the firearm and the manufacturer bears no responsibility for damages caused by the use of non-standard ammunition.

**The use of non-jacketed ammunition is strictly prohibited.**

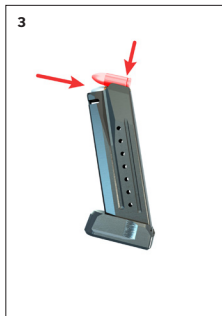


## 4. HANDLING THE PISTOL

The pistol is equipped with an ambidextrous magazine release (may be fitted either side). Hold the pistol in your right (left) hand and push the magazine release with your thumb (fig.1). The magazine will release and drop out of the frame. Always comply with the principles of safe handling of a firearm:

**POINT IN A SAFE DIRECTION!**

1. Remove the magazine (fig.1)
2. Pull the slide fully to the rear and make sure the chamber is empty (fig.2)
3. Release the slide forward
4. Pull the trigger (dry fire)



Hold the magazine with the mouth pointing upwards. Place a cartridge on the front of the follower and push it down and back until it touches the rear wall of the magazine (*fig.3*). Place the next cartridge on the top of the previous one and insert it in the same manner. If there are several cartridges in the magazine already, use the thumb of the hand holding the magazine to push down on the column of cartridges.

The number of cartridges in the magazine may be monitored through the holes. Do not exceed the capacity of the magazine, it could lead to incorrect insertion of the first cartridge into the chamber.

Insert the loaded magazine into the pistol and check it has been secured by the magazine release. Grasp the pistol grip with one hand and grip the serrated part of the slide with the thumb and index finger of the other hand. Pull the slide to its rearmost position and release it. To cock the pistol, either the front (*fig.2*) or the rear serrations may be used. This causes the trigger and striking mechanisms to be drawn and a cartridge inserted into the chamber. The pistol is now ready to fire. When loading, always keep the pistol pointed in a safe direction!

After the last cartridge has been fired, the slide stays in its rear position. Remove the empty magazine and insert a loaded one. With your shooting hand, either push the slide stop downwards (*fig.5*) or use the other hand to pull the slide back and release it. The pistol is loaded again and ready to fire.

### **Unloading the pistol**

POINT IN A SAFE DIRECTION!

1. Remove the magazine
2. Pull the slide fully to the rear and make sure the chamber is empty
3. Release the slide forward
4. Pull the trigger (dry fire)

## 5. STRIPPING AND ASSEMBLY INSTRUCTIONS

POINT IN A SAFE DIRECTION!

- Remove the magazine (fig.1)
- **MAKE SURE THERE ARE NO CARTRIDGES IN THE CHAMBER! (fig.2).**  
Fire dry from the pistol.
- Pull and release the slide so that the trigger mechanism is in the loaded position (fig.2).
- Push the front locking pin (fig.6) and pull it to its outermost position (fig.7).
- With the thumb of your shooting hand, push hard on the rear of the upper rail (fig.8) until it has been released.
- Slightly pull the upper rail forward with your thumb, pull the slider slightly back and up. (fig.9).
- Pull out the upper rail from slide (fig.10).
- Remove the piston and recoil spring assembly together with the slide (fig.11).



8



9



10



11



12



13



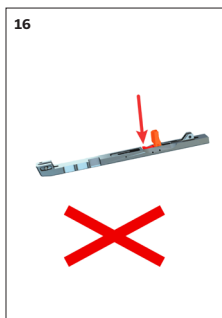
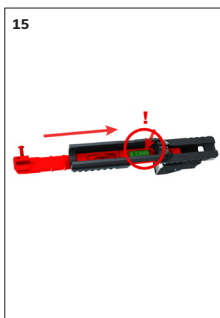


Stripping the pistol up to this point (*fig.12*) is sufficient for regular maintenance. After firing a large number of cartridges, strip the magazine as well.

**Warning!** Never release the hammer by pushing on the sear (*fig.13*). Also, always keep the hammer cocked when assembling the firearm.

**To assemble the pistol again, follow the reversed procedure:**

- Insert the recoil spring assembly (*fig.14*).
- Slide and turn the upper rail upside down, pull the hammer on the upper rail to the charged position. Slide the upper rail into the chute with your thumb pressing on the hammer (*fig.15*).
- First, insert the slide with upper rail by hooking it onto the recoil assembly and then slightly pull it backwards and down (*fig.16*).
- Push the upper rail hard into its rearmost position (*fig.17*) – until you feel click.
- Push the front locking pin in (*fig.18*).



## Stripping the magazine

The magazine has a sliding base pad at the back. Move it to the disassembly position and then slightly push the baseplate forward. Then place your thumb above the baseplate to secure the spring and remove the baseplate completely with your other hand. Be very careful during this disassembly to avoid injury by the ejected spring.

Do not disassemble any other parts of the pistol. If you believe the pistol requires adjustments or repairs, entrust it to a specialized workshop!

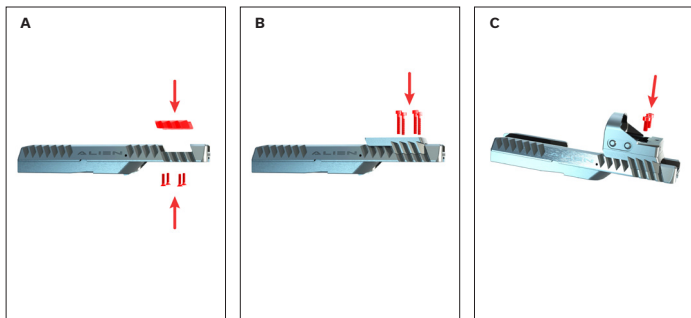
## 6. MOUNTING OF COLLIMATOR

List of collimators that can be used on the retro upgrade mount with recommended screws:

- C-MORE RTS2 - M4x10
  - LEUPOLD DELTA POINT – M4x16
  - TRIJICON SRO – M4x11,5
  - SHIELD RMS - M4x8
- 
- Insert the pins into the mount.
  - Put the collimator on the mount, fit into the pins.
  - Glue the screws with Loctite 276.
  - Insert the screws into the red dot (*fig.C*), into the holes in the collimator.
  - Tighten the screws to a torque of 1.8Nm (*fig.C*).

## 7. MOUNTING OF STONES

- The slide can also be used without the Retro holder, in which case you can install stones.
- Insert the stones on the slide (*fig.A*).
- Insert the screws from the bottom of the slider (*fig.A*).
- Tighten the screws to a torque of 0.8Nm.



## 8. CLEANING AND PRESERVATION

Clean the pistol after each use, as soon as possible after the firing, and whenever it has been exposed to moisture. In temperate climate, clean the pistol at least once a year, in adverse climatic conditions at least once a month.

### Chamber and bore cleaning

If the pistol has not been used yet or if only a few rounds have been fired, wipe the bore and the chamber with a dry cloth attached to the cleaning rod or use a boresnake cleaner. Keep changing the cleaning cloth until the pistol comes out clean.

If the bore is heavily soiled, apply a little cleaning fluid to the bore and chamber with a brush, leave for about 10 minutes (time required for the cleaning fluid to work may vary) and clean with a brush. Dry the bore and the chamber with a clean cloth and check that all combustion residue has been removed. Repeat the procedure if necessary.

Slide the cleaning stick and brush away from the chamber to avoid damaging the muzzle. Before changing the direction of cleaning, push the brush through the entire length of the barrel. If you change the direction of movement with the brush in the barrel, it may get stuck.

### Cleaning other parts of the pistol

To clean the other parts of the pistol (including the outside surface of the barrel), use a dry cloth, a toothbrush, brass brush or a wooden scraper, and use a product supplied by the manufacturer or a similar product. However, never use the solution intended for cleaning the bore! It could remain in gaps between parts and cause corrosion over time. Make sure no parts of the cleaning cloth or brush bristles remain in any part of the pistol.

### Cleaning the piston system of the pistol

**The most important part of the pistol requiring regular maintenance is the piston system. As a result of the strong firing, deposits of combustion residues form in the piston chamber and on the piston itself. Prolonged neglect of firearm can reduce its functionality. Use the carbon remover supplied by the manufacturer to clean the piston and the piston chamber. First apply this agent onto the surface to be cleaned and leave to work for about 10 minutes. Then use the "L" cleaner supplied with the accessories and with a circular motion, clean the whole piston chamber (fig. 19). Use a brush to remove any impurities from the piston. If it is impossible to remove the carbon residue with a brush, metal tools may be used.**

19



### **Preservation of the firearm**

After the bore, the chamber and all the other accessible parts have been cleaned dry, wipe them with a cloth dampened in preservation oil or use spray oil. Wipe off the excess oil.

Wipe the bore dry before firing. If you use the pistol in low temperatures, remove oil from all accessible parts or use a special lubricant designed for such conditions.

Use preservation grease only when storing the pistol in adverse weather conditions for a long time and remove it thoroughly before using it.

### **Waste management guidelines**

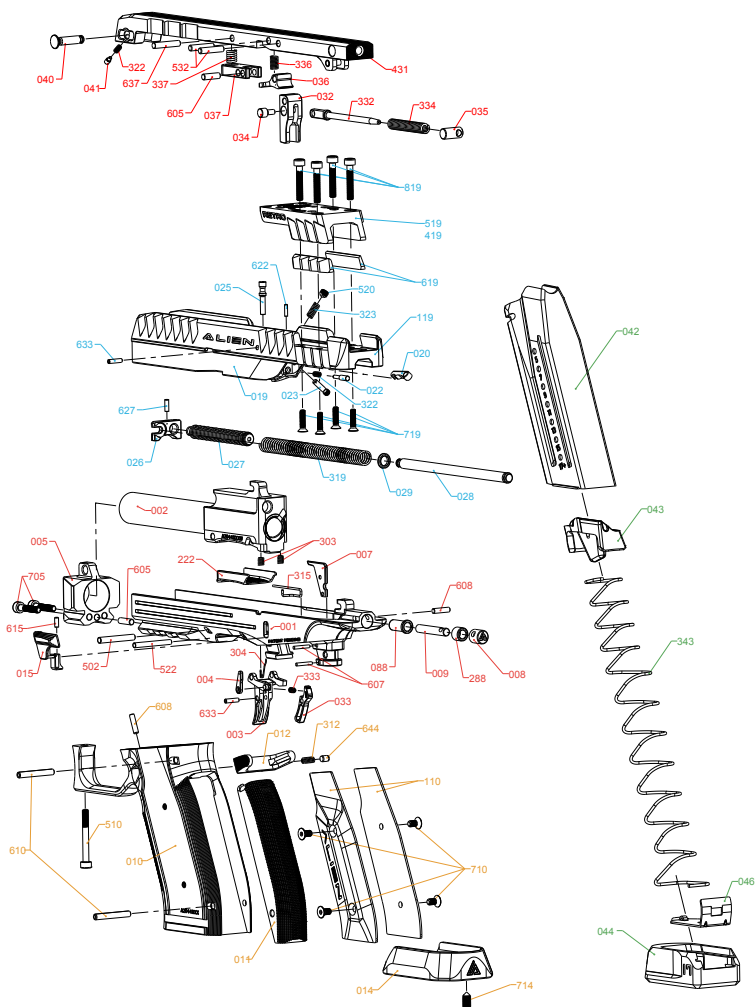
The materials used for the product and packaging do not have any negative effect on human health or the environment when used properly. In the event of the disposal of the product or its packaging, the metal parts (steel and non-ferrous metals), plastics, wood, paper and cardboard are disposed of separately in containers designated for such purpose.

## 9. LIST OF PARTS

No.	ITEM
001	FRAME
002	BARREL
222	HEATCOVER
003	TRIGGER
303	TRIGGER SPRING
033	TRIGGER SAFETY
333	SAFETY SPRING
633	TRIGGER BAR SAFETY PIN
004	DISCONNECTOR
304	DISCONNECTOR SPRING
502	BARREL PIN
522	TRIGGER PIN
007	EJECTOR
607	EJECTOR PIN
008	BUFFER TUBE
088	BUFFER COVER
288	BUFFER STOP
009	BUFFER
608	BUFFER PIN / MAGAZINE RELEASE PIN
015	SLIDE RELEASE/STOP
315	SLIDE RELEASE/STOP SPRING
615	SLIDE RELEASE/STOP PIN
005	HEAD
705	HEAD SCREW
605	HEAD PIN / PRESS PIN
010	PISTOL GRIP
110	LEFT/RIGHT GRIP
710	GRIP SCREW
011	GRIP
012	MAGAZINE CATCH
312	MAGAZINE CATCH SPRING
644	COLLIMATOR PIN / MAGAZINE CATCH SPRING PIN
608	BUFFER PIN / MAGAZINE RELEASE PIN
510	PISTOL GRIP SCREW
610	GRIP PIN

No.	ITEM
014	MAGWELL
714	MAGWELL SCREW
119	SLIDE RETRO
022	FIRING PIN
322	FIRING PIN SPRING
622	FIRING PIN PLUG
020	EXTRACTOR
023	EXTRACTOR PIN
323	EXTRACTOR SPRING
520	EXTRACTOR SCREW
025	TRIGGER BAR
633	TRIGGER BAR SAFETY PIN
026	CLIP
027	PISTON
028	GUIDE STUD
029	SPRING BASE
319	RECOIL SPRING
627	PISTON PIN
619	STONE L+P
719	STONE SCREW
419	MOUNT RETRO 7075
519	MOUNT RETRO STEEL
819	MOUNT RETRO SCREW
431	UPPER RAIL RETRO
032	HAMMER
332	HAMMER STUD
034	HAMMER BODY
035	ROLLER
036	HAMMER CATCH
334	HAMMER SPRING
336	HAMMER CATCH SPRING
532	HAMMER PIN
037	PRESS
605	HEAD PIN / PRESS PIN
337	PRESS SPRING

No.	ITEM
637	PRESS PIN
040	DISASSEMBLY PIN
322	PIN SPRING
041	TENSION PIN
042	MAGAZINE BODY 17
043	FOLLOWER
044	MAGAZINE BASE 17
343	MAGAZINE SPRING 17
046	BASE PAD L





## 10. TROUBLESHOOTING

If the firearm is used and maintained properly, malfunctions occur rarely. However, if such a situation arises, please observe the following instructions. If a malfunction occurs during firing, the risk of an accidental discharge is substantially higher. For this reason, when clearing any malfunctions, strictly follow all safety instructions. Keep the firearm pointed in a safe direction, do not turn the firearm towards yourself or towards other persons. Never place your hands in front of the muzzle! If you use your pistol for personal defence or duty, obtain some "training cartridges" and practice troubleshooting below.

	Cause	Remedy
<b>Cartridge is not fed into the chamber or the slide is not locked</b>	Magazine is not fully inserted or is damaged.	Insert the magazine properly or use a different magazine.
	The firearm or the cartridges are fouled (dirty) or too much lubricant has been used.	Clean the firearm and the cartridges dry or slightly lubricate.
<b>Misfire</b>	Cartridge may be faulty.	If the firearm does not fire after 1 minute, unload the firearm in a safe manner.
	Firing pin hole is fouled or unsuitable lubricant has been used in low ambient temperature.	Clean the firing pin hole and the firing pin or use a lubricant designed for low temperatures.
	The primer has been activated but there is no powder charge in the cartridge.	Unload the firearm and check the bullet is not jammed in the barrel.
<b>The cartridge case has not been ejected</b>	The chamber, extractor or ammunition are dirty or unsuitable lubricant has been used in low temperatures.	Clean the firearm dry or lubricate slightly with suitable lubricant. Use clean or new ammunition.

If the malfunction cannot be cleared in any manner described above, or if the firearm is damaged due to rough treatment or a fall, entrust it to a specialized workshop for inspection and repair

## **11. WARRANTY TERMS AND CONDITIONS**

Warranty is provided for this product to the following extent and under the following conditions:

### **Subject of warranty and the warranty period**

The warranty covers only defects in material and defects caused by the manufacturer. If the product is used for the purpose for which it is intended and as described in the instruction manual, Laugo Arms Czechoslovakia s.r.o. guarantees faultless function of the product for the whole warranty period.

### **The warranty does not cover:**

- mechanical damage caused by the user or parts of the product affected by such damage
- damage and faults caused by negligent maintenance, failure to comply with the instruction manual and with the safety instructions, incorrect use, operating error or unqualified intervention
- damage caused by storage in an unsuitable environment
- damage caused by using the product
- environmental damage
- defects that resulted in the price reduction of the product, unless agreed otherwise
- modifications of the product and interference thereof performed outside Laugo Arms Czechoslovakia s.r.o. or outside an authorized service of Laugo Arms Czechoslovakia s.r.o.
- defects caused by the use of non-original parts
- defects caused by ammunition not complying with the CIP or SAAMI regulations, or not approved by the manufacturer
- wear and tear caused by normal use or damage caused by rough handling
- products that have not complied with the terms and conditions of the warranty

The warranty period provided by Laugo Arms Czechoslovakia s.r.o. for all products is 24 months or 30.000 rounds. The warranty period begins from the day of the sale to the customer.

During the warranty period, all defects, unless specified in the list of exceptions in this warranty card, shall be removed free of charge. If any part of the product is replaced under warranty during the warranty period, it becomes part of the product and is therefore covered by the warranty until the end of the warranty period. The condition is that repairs are duly carried out by Laugo Arms Czechoslovakia s.r.o. or an authorized service. The warranty is extended by the time the product has been under repair.

The manufacturer strictly recommends service check at the authorised service center, or at the manufacturers facility every 30.000 rounds with possible replacement of all worn out parts. If this service check is not performed at the authorised service center or directly at the manufacturer, the product loses all warranty and the manufacturer is not liable for any damage or injury caused by the product beyond its service life.









**Warranty terms and claims**

The customer is obliged to thoroughly inspect the product upon purchasing, including the documentation, and acquaint themselves with its operation. In particular, the warranty card must be properly filled in and showing the date of purchase, and the proof of purchase (the receipt) must be present.

The customer is entitled to have the defect removed during the warranty period by Laugo Arms Czechoslovakia s.r.o. as the manufacturer, as well as by any authorized service of Laugo Arms Czechoslovakia s.r.o., regardless of where the product was purchased.

A warranty claim may only be filed upon presenting the original warranty card bearing the name of the store, date of sale and the original proof of purchase of the product (receipt) showing the product type designation, date of sale and the name of the store.

If the claimant has acquired the product from a previous owner during the warranty period and his or her name is not stated on the original proof of purchase (receipt), he or she may file a claim upon submitting an agreement on the assignment of rights ensuing from the warranty, concluded with the first customer.

In the event the claim is not accepted, Laugo Arms Czechoslovakia s.r.o. may claim compensation from the claimant for the costs associated with the complaint procedure.

The period for settling a claim is 30 calendar days from the date of a claim being filed. A claim being filed means the physical handover/delivery of the product to an authorized service or to Laugo Arms Czechoslovakia s.r.o., unless agreed otherwise with the claimant.

A record of each warranty repair must be made in the warranty card.

Date of sale

Store stamp:



**LAUGO ARMS**

CZECHOSLOVAKIA



FOR LATEST INFORMATION CHECK OUR  
FACEBOOK, INSTAGRAM OR YOUTUBE CHANNEL.



FACEBOOK



YOUTUBE



INSTAGRAM

WWW.LAUGOARMS.COM