

ALIEN

INSTRUCTION MANUAL **CREATOR**





| | |
|---|----------|
| INSTRUCTIONS FOR THE SAFE HANDLING OF THE PISTOL | 4 |
|---|----------|

| | |
|---|----------|
| PISTOL DESCRIPTION AND TACTICAL AND TECHNICAL DATA | 6 |
|---|----------|

| | |
|-------------------|----------|
| AMMUNITION | 7 |
|-------------------|----------|

| | |
|----------------------------|----------|
| HANDLING THE PISTOL | 8 |
|----------------------------|----------|

| | |
|--------------------------|-----------|
| SIGHTS ADJUSTMENT | 10 |
|--------------------------|-----------|

| | |
|--|-----------|
| STRIPPING AND ASSEMBLY INSTRUCTIONS | 14 |
|--|-----------|

| | |
|-------------------------------------|-----------|
| CLEANING AND MAINTENANCE | 21 |
|-------------------------------------|-----------|

| | |
|----------------------|-----------|
| LIST OF PARTS | 24 |
|----------------------|-----------|

| | |
|------------------------|-----------|
| TROUBLESHOOTING | 28 |
|------------------------|-----------|

| | |
|--|-----------|
| WARRANTY TERMS AND CONDITIONS | 29 |
|--|-----------|

INSTRUCTIONS FOR THE SAFE HANDLING OF THE PISTOL

Read this instruction manual carefully and follow all of the safety instructions below, which will alert you to the possible risks associated with the use of this product. Should you ever lend or sell this firearm to another person, you must always provide them with this operating and maintenance manual. The manual is also available in electronic format on the manufacturer's website.

When handling the pistol, always follow the safety instructions and treat it as if it were loaded. The manufacturer is not liable for damages caused by improper handling, interference with the weapon mechanism, non-compliance with safety instructions, or damage to the weapon due to the use of unsuitable ammunition. Familiarize yourself thoroughly with these operating and maintenance instructions before handling the weapon for the first time.

AVOID THESE DANGEROUS ACTIVITIES IN PARTICULAR:

- Never point the firearm at anything you do not intend to shoot at
- Always point in a safe direction, even if the firearm is unloaded
- Always keep the pistol under control when in use and never leave it unattended
- Check the pistol before using it (barrel obstructions, corrosion, damage, etc.)
- Do not use hand-loaded ammunition; use only original full metal jacket or semijacketed ammunition (FMJ, MJ, JHP, SP) of appropriate calibre and quality
- Never use the pistol when under the influence of intoxicating substances (alcohol, drugs, etc.)
- Use glasses and ear protection to protect your vision and hearing (shooting glasses, safety earmuffs, etc.)
- Do not put your finger on the trigger until you are ready to shoot
- Always consider the risks of your surrounding environment (ricocheting, poor visibility, etc.)
- Always make sure that the pistol is unloaded before handing it to or taking it from another person
- Never tamper with the mechanism of the pistol or modify the pistol parts in any way
- If you are unsure about the correct functioning of the firearm or its safety, contact the authorized service centre



- Observe the rules and regulations of the shooting range or facility where you are using your pistol
- Store the pistol unloaded and duly secured against the misuse of other persons, and keep it separate from the ammunition

THE PISTOL HAS THE FOLLOWING SAFETY FEATURES:

- Trigger safety
- Drop safety block
- Ultralight firing pin
- Out-of-battery fire block
- Striker status indicator

CONTACT THE AUTHORIZED SERVICE CENTRE:

Laugo Arms Czechoslovakia s.r.o.,
Pražská 9, Blansko 678 01,
Czech Republic

PISTOL DESCRIPTION AND TACTICAL AND TECHNICAL DATA

The ALIEN pistol is a semi-automatic firearm with a low bore axis and fixed barrel, using the principle of gas piston delayed blowback, intended for shooting at a distance of up to 50 metres. It is equipped with a trigger mechanism with a hybrid inverted hammerless system (HIHS). The pistol frame is divided, the upper functional part is made of high strength-stainless steel, and the lower gripping part is available in high-quality aerospace-grade aluminium composite or in polymer.

CHARACTERISTIC PROPERTIES:

- Lowest bore axis
- Gas piston delayed blowback
- Short and light trigger pull
- One-click exchangeable rails
- Non-reciprocating upper part of the slide with sights
- Bull Barrel type high-accuracy fixed barrel
- Semi-integral slide with low centre of gravity
- Highly customizable modular design
- Exchangeable pistol grip panels
- Hybrid inverted hammerless system (HIHS)

TACTICAL TECHNICAL DATA

| | |
|-----------------------------------|------------------------------------|
| Length | 210mm/8,3" |
| Width | 29 mm/1.1" |
| Height | 133 mm/5,2" |
| Barrel length | 124 mm/4,8" |
| Weight | 1072 g/2.36 lbs. |
| Weight with empty magazine | 1193 g/2.63 lbs. |
| Trigger pull | 15-20N (1.5-2.0kg/3.3-4.4lbs.) |
| Standard magazine capacity | 17 |
| Bore axis | 1.7 mm below the line of grip axis |
| Number of replaceable slide rails | infinite |
| Recoil angle | ½ compared to other models |

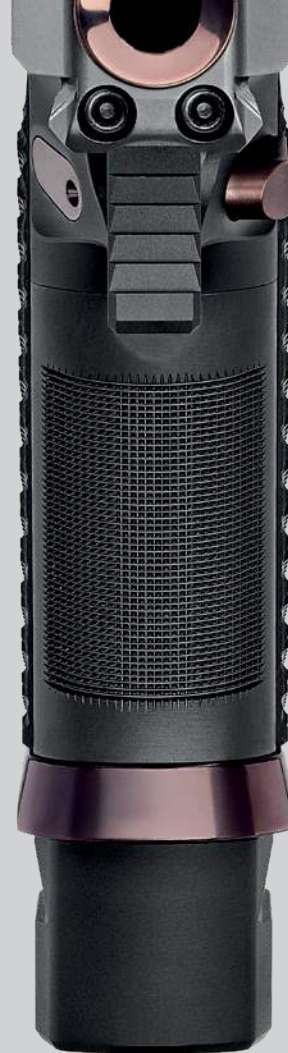
AMMUNITION

Always use original ammunition complying with the standards for ammunition manufacturers and approved by CIP (Permanent International Commission for the Proof of Small Arms) or SAAMI (Sporting Arms and Ammunition Manufacturers' Institute). Using other ammunition may cause damage to the firearm or injury to the shooter.

The manufacturer recommends against firing an empty firearm (without ammunition), as this may cause unwanted wear and tear on the weapon. For the so-called "dry firing practice", the use of dummy rounds suitable for such purpose is recommended.

The firearm has been designed to use only ammunition of the following type: FMJ, MJ, JHP, SP. Using any other kind of ammunition may lead to irregular functioning of the firearm, and the manufacturer bears no responsibility for damages caused by the use of non-standard ammunition.

**USE OF NON-JACKETED AMMUNITION
IS STRICTLY PROHIBITED.**



HANDLING THE PISTOL

Hold the pistol in your right (or left) hand and push the magazine release with your thumb (fig. 1). The magazine will release and drop out of the frame. Always comply with the principles of safe handling of a firearm:

POINT IN A SAFE DIRECTION!

1. Remove the magazine (fig. 1)
2. Pull the slide fully to the rear and make sure the chamber is empty (fig. 2)
3. Release the slide forward
4. Pull the trigger (dry fire)



Hold the magazine with the mouth pointing upwards. Place a cartridge on the front of the follower and push it down and back until it touches the rear wall of the magazine (fig. 3). Place the next cartridge on top of the previous one and insert it in the same manner. If there are several cartridges in the magazine already, push the magazine column with the thumb of the hand holding the magazine.

The number of cartridges in the magazine may be monitored through the holes. Do not exceed the magazine capacity, as this may result in incorrect insertion of the first cartridge into the chamber.

Insert the loaded magazine into the pistol and make sure it is secured with the magazine release. Grasp the pistol grip with one hand and grip the serrated part of the slide with the thumb and index finger of the other hand. Pull the slide to its rearmost position and release it. To cock the pistol, either the front (fig. 2) or the rear (fig. 4) serrations may be used. This causes the trigger and striking mechanisms to be drawn and a cartridge to be inserted into the chamber. The pistol is now ready to fire. When loading, always keep the pistol pointed in a safe direction!

After the last cartridge has been fired, the slide stays in its rear position. Remove the empty magazine and insert a loaded one. With your shooting hand, either push the slide stop downwards (fig. 5) or use the other hand to pull the slide back and release it. The pistol is loaded again and ready to fire.



1



2



3

Unloading the pistol

POINT IN A SAFE DIRECTION!

1. Remove the magazine
2. Pull the slide fully to the rear and make sure the chamber is empty
3. Release the slide forward
4. Pull the trigger (dry fire)

SIGHTS ADJUSTMENT

The pistol has been factory zeroed to a distance of 20 m, so the point of impact corresponds with the point of aim. The windage and elevation may be adjusted on the rear sight with an Allen wrench.

ATTENTION! WHEN ADJUSTING YOUR RED DOT OR IRON SIGHT, ENSURE THAT YOUR WEAPON IS DISARMED

OPERATION PROCEDURES

Red Dot Sight LAUGO 6MOA has two pressure buttons that allow setting 10 different illumination intensity levels.



- to increase brightness, push the Up arrow button
- to decrease brightness, push the Down arrow button
- to switch the device on/off, hold any of the buttons for 2-4 seconds
- the device shuts off automatically after 3 hours of inactivity
- the device starts with the same level of brightness as if it was turned off



ZEROING

Before adjusting the point, you must loosen the special blocking screw located on the back of the device (marked LOCK – fig. 1).

The device features adjustable elevation and windage dials. Each click moves the point of impact by 1MOA (1MOA = 2.9 cm @100 m).

For adjusting after unlocking the adjustments, use the Allen wrench to adjust elevation (the screw on the back marked UP – fig. 2).

During adjustment you can hear clicks 1 click equals 1MOA). Adjustment of windage is similar and is done with the screw marked R.

Once all the adjustments have been made, lock the adjustment with the screw marked LOCK (fig. 3).



1



2



3

BATTERY

The device is powered by a single 3V CR2032 battery.

The battery container is a small tray on the right side of the device. Pull out the tray, insert the battery with the positive side up, and then slide the tray back into the body (fig. 4).



MAINTENANCE

Red Dot Sight LAUGO 6MOA, despite its robust construction, is a precision optical device that needs appropriate care.

Never attempt to disassemble the device.

If the device needs cleaning or repair, send it to a professional repair department in order to eliminate any defects.

When you are not using your red dot sight, put a cap on it to prevent dust and any debris from entering.

Mechanical components should be cleaned with a soft brush.

The device should be stored in a dry place.

Avoid storing the device at high temperatures (e.g., in a closed car on a hot day).

High temperatures may adversely affect the grease and other interior materials and parts of the device.

Inadequate cleaning by rubbing or using inappropriate cloth can permanently damage the lens coating.

IRON SIGHTS ADJUSTMENT

The iron sights are adjustable for elevation (vertical point of impact adjustment) and windage (horizontal point of impact adjustment).

The sight adjustments use a reference point of 25 meters (~82 feet).

The windage can be adjusted via the screw on the right side of the rear sight - turning the screw clockwise will shift the point of impact to the right. Turning the screw counter-clockwise will shift the point of impact to the left.

One click on the windage adjustment screw will shift the point of impact horizontally by 8 mm at 25 meters.

The elevation can be adjusted with the screw on the top of the rear sight. Turning the elevation screw counter-clockwise will shift the point of impact up. Turning the screw clockwise will shift the point of impact down.

One click on the elevation adjustment screw will shift the point of impact vertically by 10 mm at 25 meters.



STRIPPING AND ASSEMBLY INSTRUCTIONS

POINT IN A SAFE DIRECTION!

- Remove the magazine (fig. 1).
- MAKE SURE THERE ARE NO CARTRIDGES IN THE CHAMBER! (fig. 2).
- Dry fire the pistol.
- Pull and release the slide so that the trigger mechanism is in the loaded position (fig. 4, 5).
- Push the front locking pin (fig. 6) and pull it to its outermost position (fig. 7).
- With the thumb of your shooting hand, push hard on the rear of the upper rail (fig. 8) until it has been released (fig. 9).
- Remove the upper rail in a forward upward movement (fig. 10).
- Slightly pull the slide backwards (fig. 11) and up (fig. 12). Remove the piston and recoil spring assembly together with the slide (fig. 13).



1



2



4



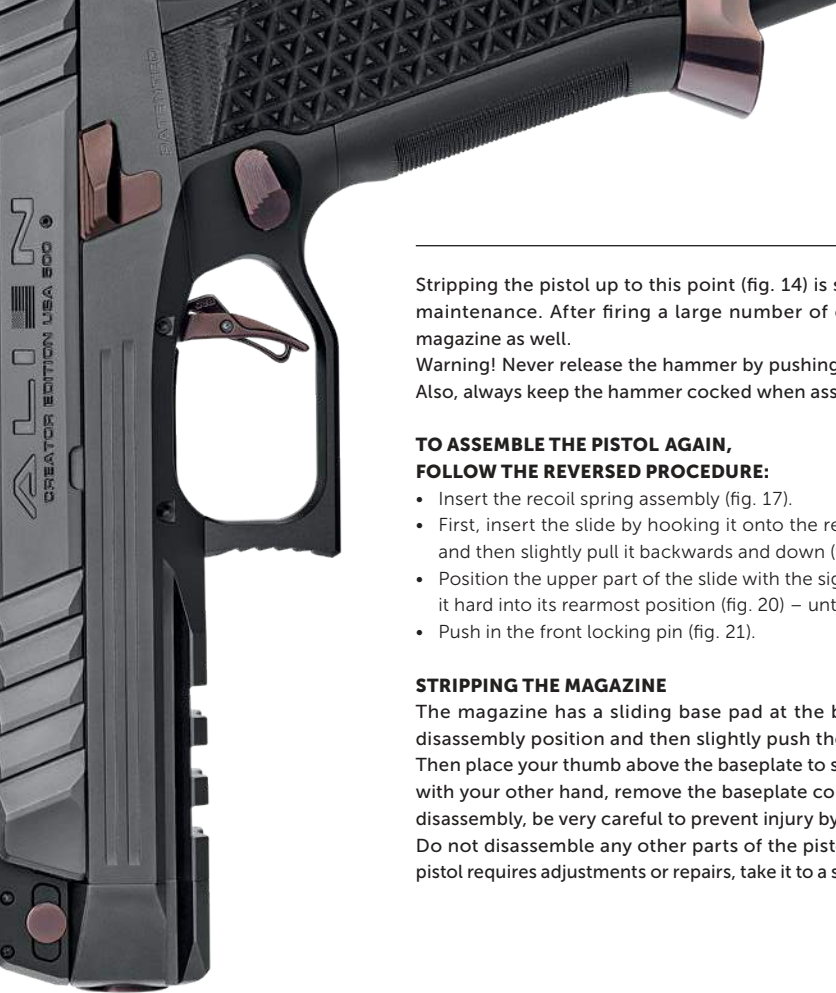
5



6



7



Stripping the pistol up to this point (fig. 14) is sufficient for regular maintenance. After firing a large number of cartridges, strip the magazine as well.

Warning! Never release the hammer by pushing on the sear (fig. 16). Also, always keep the hammer cocked when assembling the firearm.

**TO ASSEMBLE THE PISTOL AGAIN,
FOLLOW THE REVERSED PROCEDURE:**

- Insert the recoil spring assembly (fig. 17).
- First, insert the slide by hooking it onto the recoil spring assembly and then slightly pull it backwards and down (fig. 18).
- Position the upper part of the slide with the sights (fig. 19) and push it hard into its rearmost position (fig. 20) – until you feel a click.
- Push in the front locking pin (fig. 21).

STRIPPING THE MAGAZINE

The magazine has a sliding base pad at the back. Move it to the disassembly position and then slightly push the baseplate forward. Then place your thumb above the baseplate to secure the spring and with your other hand, remove the baseplate completely. During this disassembly, be very careful to prevent injury by the ejected spring. Do not disassemble any other parts of the pistol. If you believe the pistol requires adjustments or repairs, take it to a specialized workshop.



8



9



10



11



12



13



14



16

USER ASSEMBLY INSTRUCTIONS FOR THE CREATOR GRIP.

- **Disassembly of the grip screw (fig. 1).**
Use a Torx 10 wrench to disassemble.
- **Disassembly of the magwell (fig. 2).**
Slide the magwell backwards to the stop. Then pull it outwards from the pistol.
- **Disassembly of the backstrap (fig. 3).**
Squeeze pistol grips between the thumb and forefinger of the left hand and pull out the backstrap in the direction of the arrow.
- **Disassembly of the frontstrap (fig. 4).**
Squeeze pistol grips between the thumb and forefinger of the right hand and pull out the frontstrap in the direction of the arrow.
- **Disassembly of the left grip (fig. 5).**
First tilt the left grip by approx. 10° and then pull it out of the frame.
- **Disassembly of the right grip (fig. 6).**
First tilt the right grip by approx. 10° and then pull it out of the frame.
- **Interchangeable pistol grip parts are disassembled (fig. 7)**
- **Fig. 7a - Ring assembly into the grip**
Press 3 pcs. of O-Rings into the grooves on the inside of the grip. Press each ring several times with your finger. Turn the inside of the grip down and make sure the rings hold in place and do not fall out.
- **Fig. 7b - Securing selected areas**
Apply a drop of Loctite 234 adhesive to the marked areas of the grip. Do this step only after you are satisfied with adjusting the shape of the Creator grip. If you are still testing the ergonomics, skip this step and continue with the assembly.



1



4



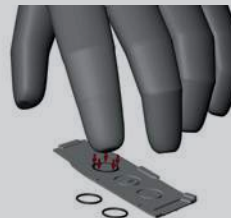
5/6



7



2



7a



7b



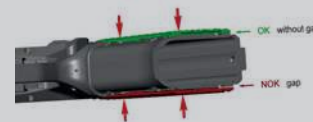
8



3



9



10



11

CLEANING AND MAINTENANCE



12



13



14

- **Assembly of the left grip (fig. 8).**
Insert the upper tongue of the grip into the recess in the frame, then snap the grip to the pistol.
- **Assembly of the right panel (fig. 9).**
Insert the top tongue of the panel into the recess in the frame, then snap the panel onto the grip.
- **Checking the correct placement of the grips (fig. 10).**
Hold the pistol grip so that the panels are still squeezed between the thumb and forefinger of the right hand. Look at the bottom of the grip to check that the panels (grips) are under pressure, fitting snugly to the grip without any gaps.
- **Assembly of the frontstrap (fig. 11).**
Hold the grips tightly with your right hand. Attach the frontstrap to the locks in the direction of the arrows. The yellow-marked tongues must slide into the internal recesses of the frontstrap. Proceed carefully; do not force the frontstrap.
- **Assembly of the rear backstrap (fig. 12).**
Hold the grips tightly with your left hand. Attach the backstrap to the locks in the direction of the arrows. The tongues must slide into the internal recesses of the backstrap. Proceed carefully; do not force the backstrap.
- **Assembly of the magwell (fig. 13).**
Insert the guiding protrusions into the grip, then slide the magwell forward until it stops.
- **Assembly of the grip screw (fig. 14).**
Apply a drop of Loctite 242 adhesive at the beginning of the thread. Use a Torx 10 key for assembly. Tighten the screw with a torque of 1.3 Nm (0.96 lb ft).

Clean the pistol after every use, as soon as possible after firing, and every time it has been exposed to moisture. In temperate climate, clean the pistol at least once a year; in adverse climatic conditions at least once a month.

CHAMBER AND BORE CLEANING

If the pistol has not been used yet or if only a few rounds have been fired, wipe the bore and the chamber with a dry cloth attached to a cleaning rod or use a boresnake cleaner. Keep changing the cleaning cloth until it comes out clean.

If the bore is heavily soiled, apply a little cleaning fluid to the bore and chamber with a brush, leave for about 10 minutes (time required for the cleaning fluid to work may vary) and clean with a brush. Dry the bore and the chamber with a clean cloth and check that all combustion residue has been removed. Repeat the procedure if necessary.

Slide the cleaning stick and brush away from the chamber to avoid damaging the muzzle. Before changing the direction of cleaning, push the brush through the entire length of the barrel. If you change the direction of movement with the brush in the barrel, it may get stuck.

CLEANING OTHER PARTS OF THE PISTOL

To clean the other parts of the pistol (including the outside surface of the barrel), use a dry cloth, a toothbrush, a brass brush, or a wooden scraper, and use a product supplied by the manufacturer or a similar product. However, never use the solution intended for cleaning the bore! It could remain in gaps between parts and cause corrosion after some time.

Make sure no parts of the cleaning cloth or brush bristles remain in any part of the pistol.

CLEANING THE PISTON SYSTEM OF THE PISTOL

The most important part of the pistol requiring regular maintenance is the piston system. As a result of the strong firing, deposits of combustion residue form in the piston chamber and on the actual piston. Neglecting the care of the firearm in the long term may reduce its functionality. Use the Carbon Remover supplied by the manufacturer to clean the piston and the piston chamber. First apply this agent onto the surface to be cleaned and leave to work for about 10 minutes. Then use the "L" cleaner supplied with the accessories and with a circular motion, clean the whole piston chamber (fig. 15). Use a brush to remove any impurities from the piston. If it is impossible to remove the carbon residue with a brush, metal tools may be used.

PRESERVATION OF THE FIREARM

After the bore, the chamber, and all the other accessible parts have been cleaned dry, wipe them with a cloth dampened in preservation oil or use spray oil. Wipe off the excess oil.

Wipe the bore dry before firing. If you use the pistol in low temperatures, remove oil from all accessible parts or use a special lubricant designed for such conditions.

Use preservation grease only when storing the pistol in adverse weather conditions for a long time, and remove it thoroughly before using it.

WASTE MANAGEMENT GUIDELINES

The materials used for the product and packaging, when used properly, do not have any negative effect on human health or the environment. In the event of the disposal of the product or its packaging, the metal parts (steel and non-ferrous metals), plastics, wood, paper, and cardboard are disposed of separately in containers designated for such purpose.



15



17



18



19



20



21

LIST OF PARTS

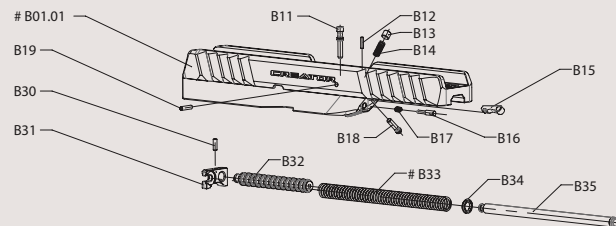
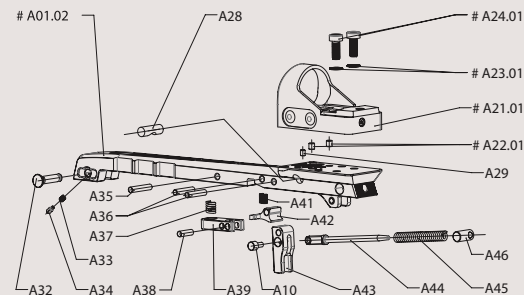
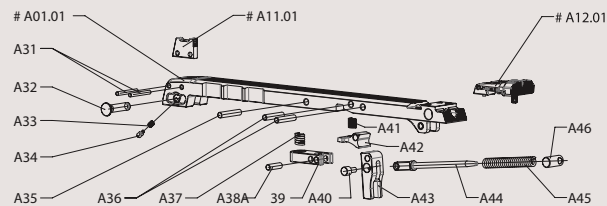
A

| | |
|---------------|--|
| A01.01 | UPPER RAIL |
| A01.02 | UPPER RAIL COLLIMATOR |
| A11.01 | FRONT SIGHT |
| A11.02 | FRONT SIGHT TARGET |
| A12.01 | ADJUSTABLE REAR SIGHT |
| A12.02 | ADJUSTABLE REAR SIGHT TARGET |
| A21.01 | COLLIMATOR C-MORE |
| A22.01 | COLLIMATOR C-MORE PIN |
| A22.02 | COLLIMATOR LEUPOLD DELTAPOINT |
| A22.03 | COLLIMATOR TRIJICON SRO AND SHIELD RMS PIN |
| A23.01 | WASHER C-MORE |
| A24.01 | SCREW C-MORE |
| A24.02 | SCREW LEUPOLD DELTAPOINT |
| A24.03 | SCREW TRIJICON SRO |
| A24.04 | SCREW SHIELD RMS |
| A28 | HAMMER BUFFER |
| A29 | HAMMER BUFFER SCREW |
| A31 | FRONT SIGHT PIN |
| A32 | DISASSEMBLY PIN |
| A33 | FIRING PIN SPRING |
| A34 | TENSION PIN |
| A35 | PRESS PIN |
| A36 | HAMMER PIN |
| A37 | PRESS SPRING |
| A38 | HEAD-PRESS PIN |
| A39 | PRESS |
| A40 | HAMMER BODY |
| A41 | HAMMER CATCH SPRING |
| A42 | HAMMER CATCH |

| | |
|------------|---------------|
| A43 | HAMMER |
| A44 | HAMMER STUD |
| A45 | HAMMER SPRING |
| A46 | ROLLER |

B

| | |
|---------------|---------------------|
| B01.01 | SLIDE |
| B11 | TRIGGER BAR |
| B12 | FIRING PIN PLUG |
| B13 | EXTRACTOR SCREW |
| B14 | EXTRACTOR SPRING |
| B15 | EXTRACTOR |
| B16 | FIRING PIN |
| B17 | FIRING PIN SPRING |
| B18 | EXTRACTOR PIN |
| B30 | PISTON PIN |
| B31 | CLIP |
| B32 | PISTON |
| B33.01 | RECOIL SPRING |
| B33.02 | RECOIL SPRING LIGHT |
| B34 | SPRING BASE |
| B35 | GUIDE STUD |



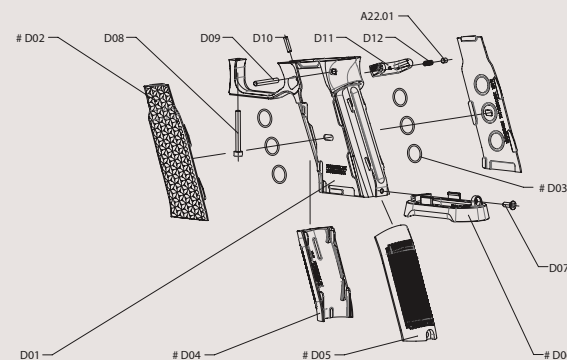
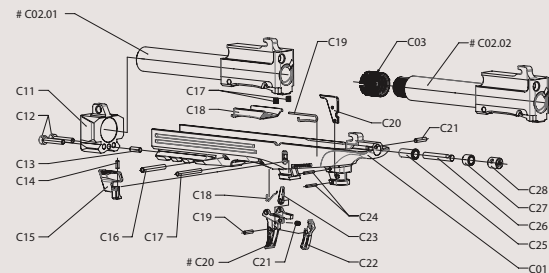
LIST OF PARTS

C

| | |
|---------------|-----------------------------|
| C01 | FRAME |
| C02.01 | BARREL ASSEMBLY |
| C02.02 | BARREL TACTICAL ASSEMBLY |
| C03 | THREAD COVER |
| C05 | TRIGGER SPRING |
| C06 | HEATCOVER |
| C07 | SLIDE RELEASE / STOP SPRING |
| C08 | EJECTOR |
| C11 | HEAD |
| C12 | HEAD SCREW |
| C13 | HEAD PIN |
| C14 | SLIDE RELEASE / STOP PIN |
| C15 | SLIDE RELEASE / STOP |
| C16 | BARREL PIN |
| C17 | TRIGGER PIN |
| C18 | DISCONNECTOR SPRING |
| C19 | TRIGGER BAR SAFETY PIN |
| C20.01 | TRIGGER |
| C20.02 | TRIGGER SMOOTH |
| C21 | SAFETY SPRING |
| C22 | TRIGGER SAFETY |
| C23 | DISCONNECTOR |
| C24 | EJECTOR PIN |
| C25 | BUFFER COVER |
| C26 | BUFFER |
| C27 | BUFFER STOP |
| C28 | BUFFER TUBE |
| C29 | BUFFER PIN |

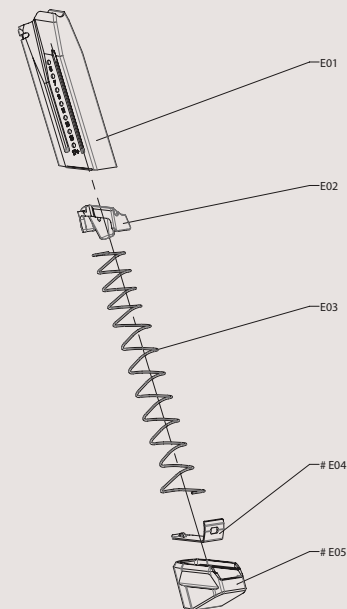
D

| | |
|---------------|------------------------------|
| D01 | PISTOL GRIP AL |
| D02.01 | LEFT RIGHT GRIP S G10 SET |
| D02.02 | LEFT RIGHT GRIP S AL SET |
| D02.03 | LEFT RIGHT GRIP S CARBON SET |
| D02.04 | LEFT RIGHT GRIP S TAPE SET |
| D02.11 | LEFT RIGHT GRIP M G10 SET |
| D02.12 | LEFT RIGHT GRIP M AL SET |
| D02.13 | LEFT RIGHT GRIP M CARBON SET |
| D02.14 | LEFT RIGHT GRIP M TAPE SET |
| D02.21 | LEFT RIGHT GRIP L G10 SET |
| D02.22 | LEFT RIGHT GRIP L AL SET |
| D02.23 | LEFT RIGHT GRIP L CARBON SET |
| D03.01 | O-RING |
| D04.01 | FRONTSTRAP M |
| D04.02 | FRONTSTRAP M TAPE SET |
| D05.01 | BACKSTRAP M |
| D05.02 | BACKSTRAP M TAPE SET |
| D05.03 | BACKSTRAP L |
| D06.01 | MAGWELL M |
| D06.02 | MAGWELL L |
| D06.03 | MAGWELL IPSC |
| D07 | GRIP SCREW |
| D08 | PISTOL GRIP SCREW |
| D09 | GRIP PIN |
| D10 | MAGAZINE RELEASE PIN |
| D11.01 | MAGAZINE CATCH |
| D12 | MAGAZINE CATCH SPRING |
| D13 | MAGAZINE CATCH SPRING PIN |



E

| | |
|---------------|--------------------------|
| E01 | MAGAZINE BODY 17 |
| E02 | FOLLOWER |
| E03 | MAGAZINE SPRING 17 |
| E04 | BASE PAD L |
| E05.01 | MAGAZINE BASE 17 CREATOR |



TROUBLESHOOTING

If the firearm is used and maintained properly, malfunctions rarely occur. However, if such a situation should arise, please observe the following instructions. If a malfunction occurs during firing, the risk of an accidental discharge is substantially higher. For this reason, when clearing any malfunctions, strictly follow all safety instructions. Keep the firearm pointed in a safe direction; do not turn the firearm towards yourself or towards other persons. Never place your hands in front of the muzzle! If you use your pistol for personal defence or duty, obtain some “training cartridges” and practice troubleshooting the malfunctions below.

| Cause | Remedy |
|---|--|
| Cartridge is not fed into the chamber or the slide is not locked | <div>Magazine is not fully inserted or is damaged.</div> <div>The firearm or the cartridges are fouled (dirty) or too much lubricant has been used.</div> <div>Insert the magazine properly or use a different magazine.</div> <div>Clean the firearm and the cartridges dry or slightly lubricate.</div> |
| Misfire | <div>Cartridge may be faulty.</div> <div>Firing pin hole is fouled or unsuitable lubricant has been used in low ambient temperature.</div> <div>The primer has been activated but there is no powder charge in the cartridge.</div> <div>If the firearm does not fire after 1 minute, unload the firearm in a safe manner.</div> <div>Clean the firing pin hole and the firing pin or use a lubricant designed for low temperatures.</div> <div>Unload the firearm and check the bullet is not jammed in the barrel.</div> |
| The cartridge case has not been ejected | <div>The chamber, extractor, or ammunition are dirty or unsuitable lubricant has been used in low temperatures.</div> <div>Clean the firearm dry or lubricate slightly with suitable lubricant. Use clean or new ammunition.</div> |

If the malfunction cannot be cleared in any manner described above, or if the firearm is damaged due to rough treatment or due to a fall, entrust it to a specialized workshop for inspection and repair.

WARRANTY TERMS AND CONDITIONS

Warranty is provided for this product to the following extent and under the following conditions:

SUBJECT OF WARRANTY AND THE WARRANTY PERIOD

The warranty covers only defects in material and defects caused by the manufacturer. If the product is used for the purpose for which it is intended and as described in the instruction manual, Laugo Arms Czechoslovakia s.r.o. guarantees faultless function of the product for the entire warranty period.

THE WARRANTY DOES NOT COVER:

- mechanical damage caused by the user or parts of the product affected by such damage
- damage and faults caused by negligent maintenance, failure to comply with the instruction manual and with the safety instructions, incorrect use, operating error, or unqualified intervention
- damage caused by storage in an unsuitable environment
- damage caused by using the product
- environmental damage
- defects that roccurred due to modifications of the product and interference thereof performed outside Laugo Arms Czechoslovakia s.r.o. or outside an authorized service of Laugo Arms Czechoslovakia s.r.o., which resulted in a price reduction of the product
- defects caused by the use of non-original parts
- defects caused by ammunition not complying with the CIP or SAAMI regulations, or not approved by the manufacturer
- wear and tear caused by normal use or damage caused by rough handling
- products that have not complied with the terms and conditions of the warranty

The warranty period provided by Laugo Arms Czechoslovakia s.r.o. for all products is 24 months or 30,000 rounds. The warranty period begins from the day of the sale to the customer. During the warranty period, all defects, unless specified in the list of exceptions in this warranty card, shall be removed free of charge. If any part of the product is replaced under warranty during the warranty period, it becomes part of the product and is therefore covered by the warranty until the warranty period ends.

The condition is that repairs are duly carried out by Laugo Arms Czechoslovakia s.r.o. or an authorized service. The warranty is extended for the period of time that the product was being repaired.

The manufacturer strictly recommends service check at the authorized service centre, or at the manufacturer's facility every 30,000 rounds with possible replacement of all worn-out parts. If this service check is not performed at the authorized service centre or directly at the manufacturer then the product loses all warranty and the manufacturer is not responsible for any damage or injury caused by the product beyond its service life.



WARRANTY TERMS AND CLAIMS

The customer is obliged to thoroughly inspect the product at the time of purchase, including the documentation, and to become familiar with its operation. In particular, the warranty certificate must be duly completed, stating the date of purchase, and proof of purchase (receipt) must be present.

The customer is entitled to have the defect removed during the warranty period by Laugo Arms Czechoslovakia s.r.o. as the manufacturer, as well as by any authorized service of Laugo Arms Czechoslovakia s.r.o., regardless of where the product was purchased.

The warranty claim can be made only after submitting the original warranty card with the name of the store, the date of sale, and the original proof of purchase of the product (receipt), which states the type designation of the product, date of sale and name of the store.

If the claimant has acquired the product from a previous owner during the warranty period and his or her name is not stated on the original proof of purchase (receipt), he or she may file a claim upon submitting an agreement on the assignment of rights ensuing from the warranty, concluded with the first customer. In the event of non-acknowledgment of the claim, Laugo Arms Czechoslovakia s.r.o. may claim compensation from the claimant for the costs associated with the claim procedure.

The period for settling a claim is 30 calendar days from the date of the claim being filed. A claim being filed means the physical handover/delivery of the product to an authorized service or to Laugo Arms Czechoslovakia s.r.o., unless agreed otherwise with the claimant.

Each warranty repair must be recorded in the warranty card.

Date of sale

Store stamp:



www.laugoarms.com

