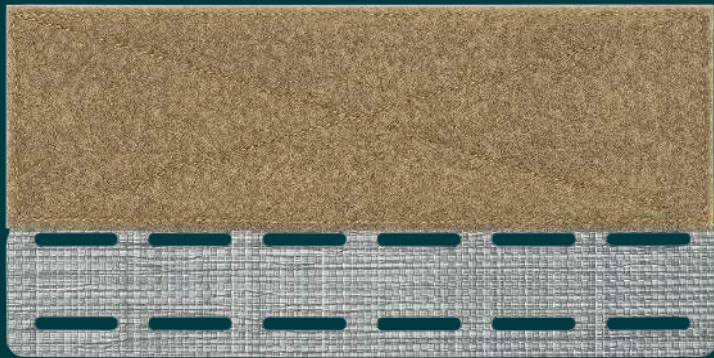


FERRO CONCEPTS



The Hangboard™ | Table of Contents

Product Overview	1
The Hangboard™ Installation	2-6
Shock Cord Routing	7-10



The Hangboard™



The Hangboard™ | Product Overview

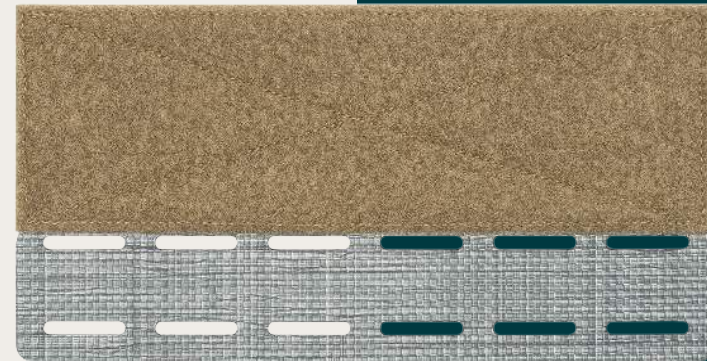
The Hangboard™ is a one-row by six-column section of MOLLE that attaches to carriers just like The Dangler™ and The Mini Dangler™. Utilizing a 3"x9.25" section of hook and loop, The Hangboard can be tucked under front flaps or in the plate bags. Turn things like our 6x5 and 6x9 General Purpose Pockets into Dangers™ for some extra storage or secure things like door charges with some shock cord for quick access! You can think of The Hangboard™ as a universal Dangler™ adapter.

Features:

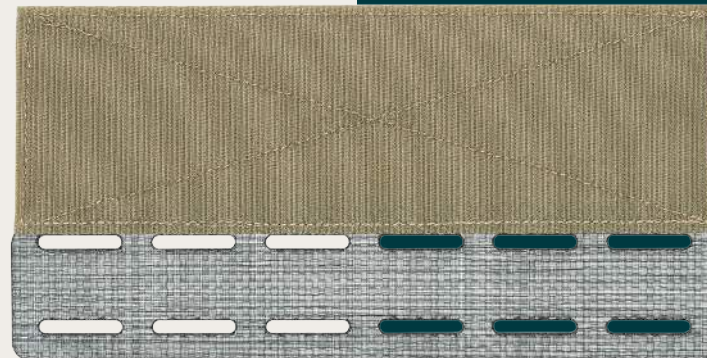
- Allows for running accessories as Dangers™
- Can be run with either hook forward or loop depending on need
- Works as a platform for storing things like door charges
- Attaches in your plate bag or under your front flap
- Compatible with any armor carrier that has loop velcro on the front or rear as well as any plate pockets that secure with hook and loop
- The Retention Collection can be used to tie down items to The Hangboard™
- Made in USA

Components:

- The Hangboard™



The Hangboard™ (Front)

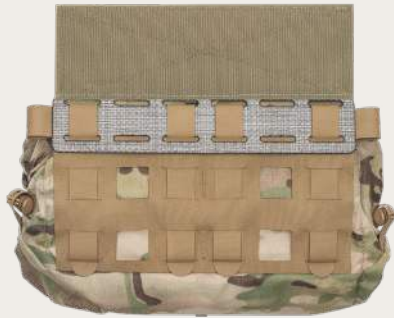


The Hangboard™ (Back)

The Hangboard™ | Installation



The Hangboard™
with The Guss™



The Hangboard™
with The Guss™ (Back)



The Hangboard™
with General Purpose Pocket - 6x5 (2)



The Hangboard™ | Installation



1. To attach MOLLE-equipped items to The Hangboard™, start by weaving the MOLLE straps through the top row of laser-cut MOLLE on The Hangboard™. The orientation of The Hangboard™ can be swapped to either side. Take a second to verify which direction it should face before weaving the MOLLE.



2. Once top row is complete, weave the MOLLE straps through the bottom row of laser-cut MOLLE on The Hangboard™.

The Hangboard™ | Installation



3. Continue weaving the MOLLE straps through the MOLLE equipment item to secure The Hangboard™.



4. Finish weaving MOLLE straps on MOLLE equipment item. Insert tuck tabs if applicable.

The Hangboard™ | Installation



5. To install on a carrier, remove the armor plate and securely fasten the hook of The Hangboard™ to the loop inside the plate pocket.



6. Re-insert the armor plate.

The Hangboard™ | Installation

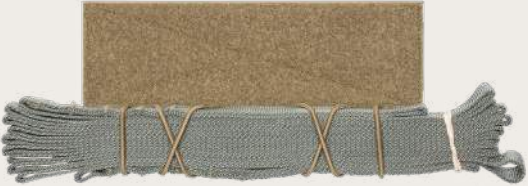


7. Re-insert the plate flap into the plate bag. Attach the hook of the plate flap closure to the loop on the front of The Hangboard™.



8. Alternatively, The Hangboard™ can be mounted between the carrier and front flap for a quick DON/DOFF solution.

The Hangboard™ | Shock Cord Routing



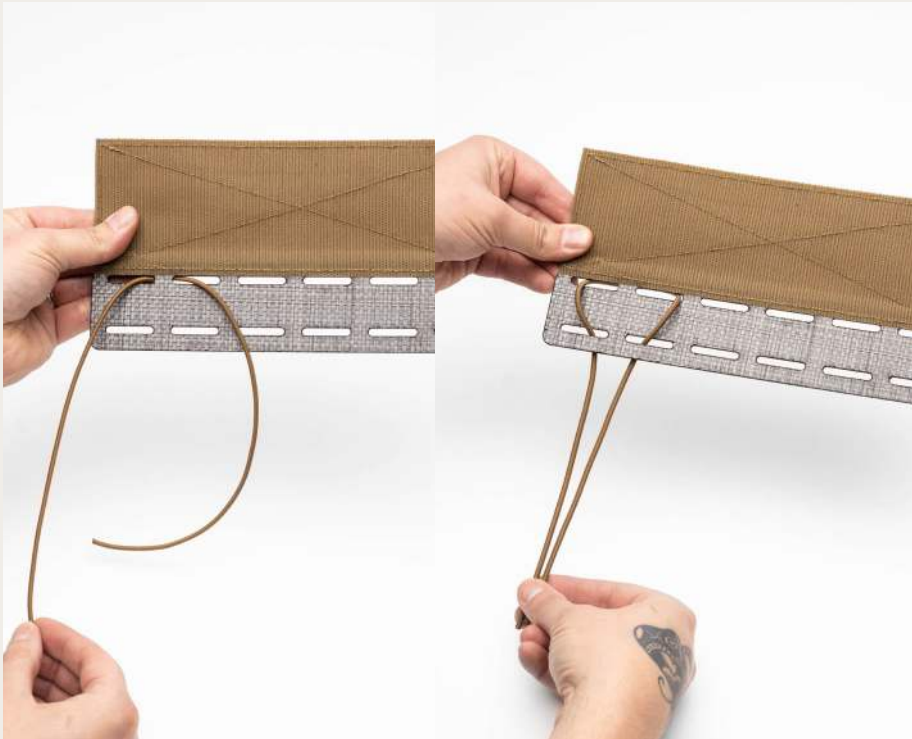
Tubular Nylon on The Hangboard™ with Shock Cord Retention



Slap Charges on The Hangboard™ with Shock Cord Retention



The Hangboard™ | Shock Cord Routing



1. Loop the shock cord through the top two laser-cut MOLLE slots, then the two slots beneath it. This creates two loops.

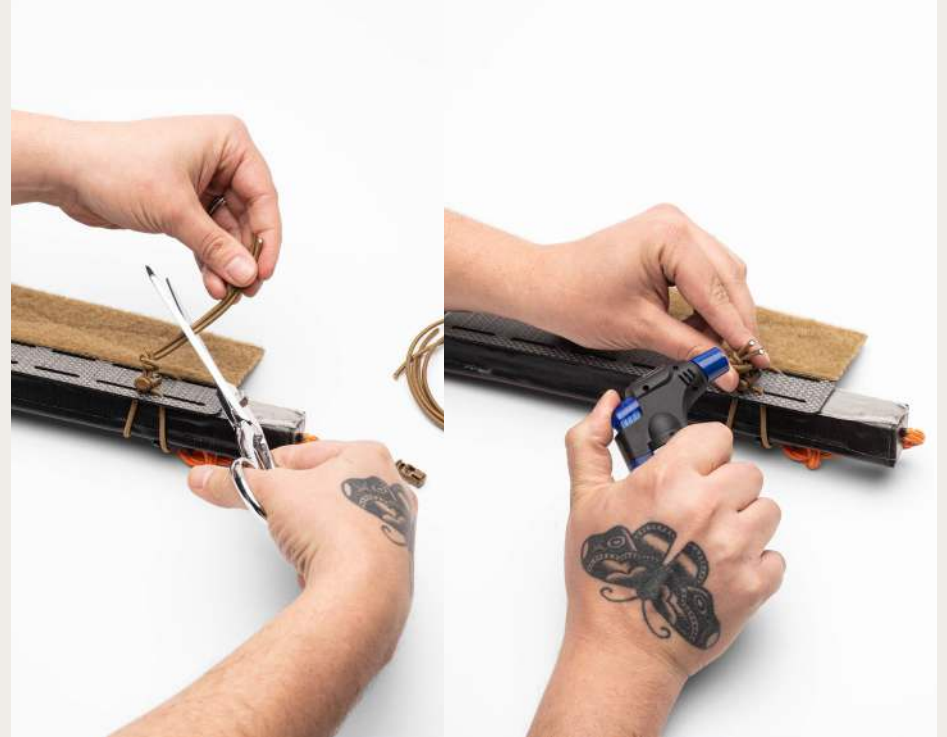


2. Test fit the item you're trying to secure to The Hangboard™. With the item through the loops, push the shock cord through the cord lock. Cinch it down to where you want it.

The Hangboard™ | Shock Cord Routing



3. Tie the shock cord in an overhand knot. We suggest not tying the knot at the cord lock. Instead, leave yourself some room for further adjustments later.



4. Cut the shock cord and burn the ends.

The Hangboard™ | Shock Cord Routing



5. Repeat steps 1-4 to finish.



6. The method outlined above isn't the only way to secure items to The Hangboard™ with shock cord. There are all sorts of ways to do it!